

\$30,000

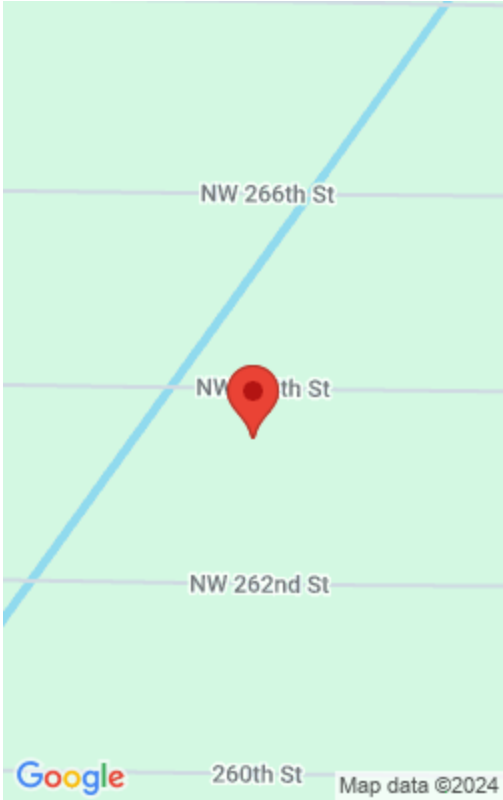
• Active

15630 264TH STREET, OKEECHOBEE, FL, 34972

<https://comwire.com>

1.25-acre lot in growing area, just a few miles from the Kissimmee Prairie Reserve. Zoned for both residential and agricultural use, offering a range of possibilities for your ideal property. Ideal for building your dream home, establishing plant nurseries, setting up fishing farms, creating private cemeteries, or starting a farm. Homes are close and on

[+ Read More](#)



Basics



Status: Active

Date added: Added 2 weeks ago

Est. Taxes: \$350

For Sale: No

Listing Office Name: Realty ONE Group Innovation

Listing Office Id: 276547391

Lot size: 1.25 sq ft

Price/Acre: \$24,000

For Lease: No

Site Details

Acres: 1.25

Improvements: None

Waterfrontage: none

Lot Description: 1 to < 2 Acres

Ground Cover: Brush

Lot SqFt: 54500.00

Utilities On Site: None

Front Exp: Northwest

Roads: Dirt,Other,Paved

Soil Type: Dirt,Other

Building Details

Type: Single Family Detached

Docs Available: None

Additional Info

Listing Agent Phone: (561) 403-0771

Agent Id: 276537892

Listing Office: Realty ONE Group Innovation

MLS Source: Realtor Association of the Palm Beaches (RAPB)

