



19466 NW 258TH ST, OKEECHOBEE, FL 34972, USA

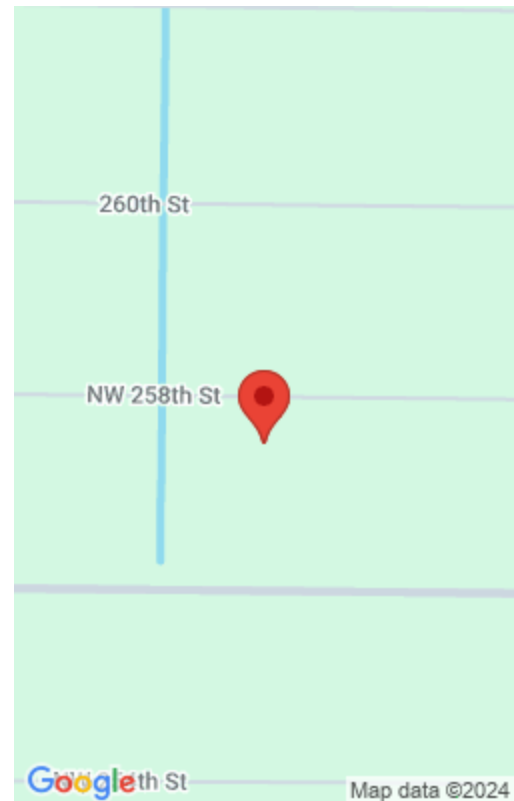
<https://comwire.com>

Envisioning your dream home on a spacious 1.25-acre lot in Okeechobee County offers the perfect blend of privacy and accessibility. This property has been cleared and has a culvert already in place. The area is not just a haven for those seeking solitude but also a paradise for outdoor enthusiasts. The nearby Kissimmee River Preserve

[+ Read More](#)

\$26,000

• Active



Basics



Status: Active

Date added: Added 1 month ago

For Sale: No

Listing Office Name: American Realty of PSL LLC

Listing Office Id: 276736100

Est. Taxes: \$381.44

For Lease: No

Site Details

Lot SqFt: 54450.00

Utilities On Site: None

Lot Description: 1 to < 2 Acres

Ground Cover: Other

Improvements: Cleared

Front Exp: North

Roads: Dirt

Building Details

Type: Single Family Detached

Docs Available: None

Additional Info

Listing Agent Phone: (772) 200-5418

Listing Office: American Realty
of PSL LLC

MLS Source: Realtor Association of the Palm Beaches (RAPB)

